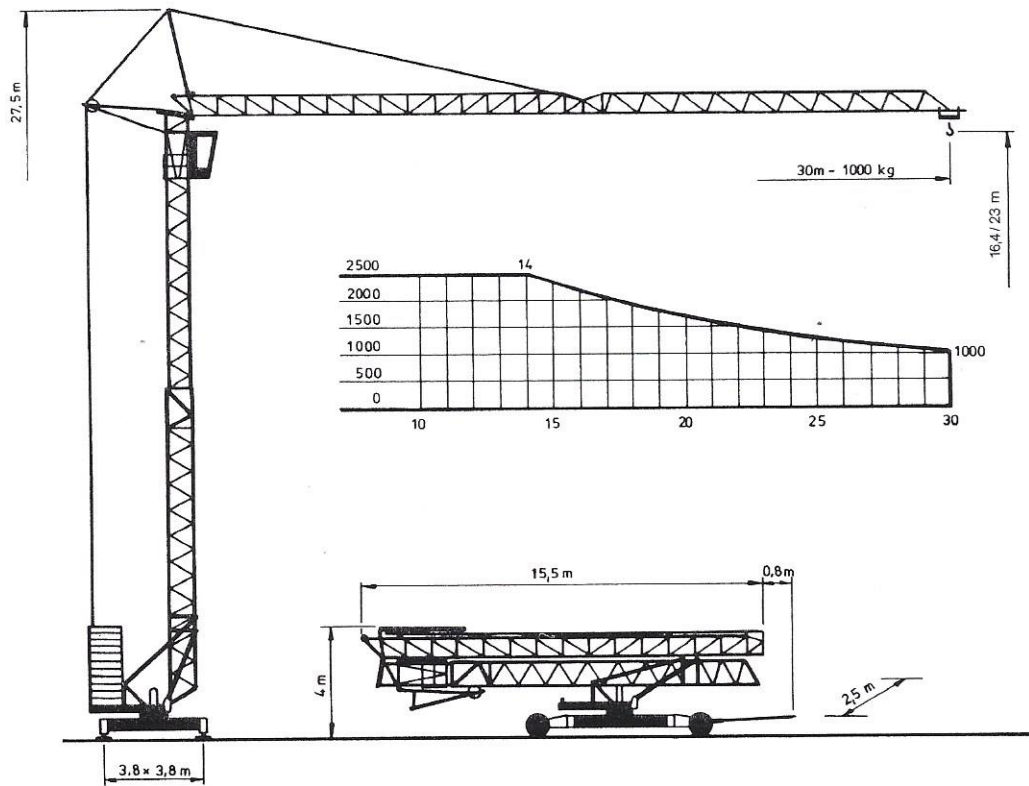
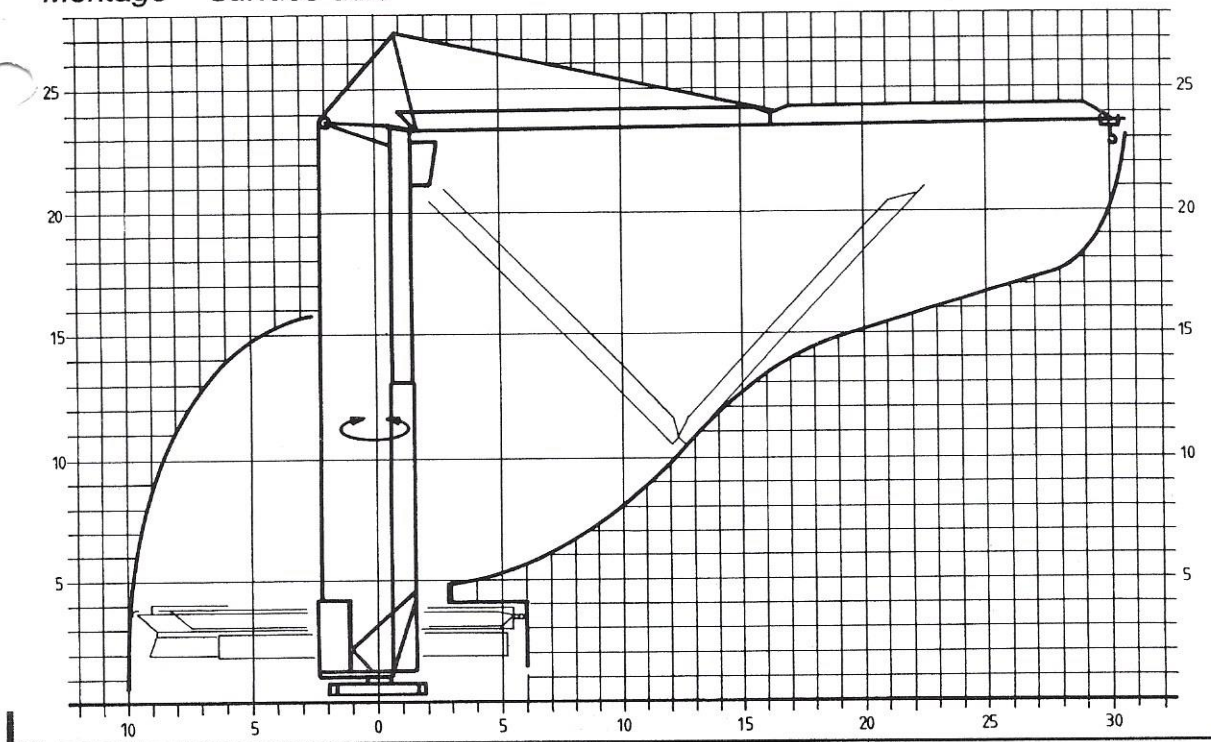


# PEKAZETT 3010 SM

DIN 15018  
BGL 2105 - 0031  
30m - 1000 kg, max. - 2500 kg












**Montage - Platzbedarfsdiagramm**  
Assembly - Space required diagram  
*Montage - Surface utile*



# PEKAZETT 3010 SM

<b>Leistungsdaten</b> performance data details techniques	Ausladung (m) radius portée	Tragkraft (kg) lifting capacity capacité	Max. Tragkraft (kg) lifting capacity max. capacité max.
	30	1000	2500

<b>Geschwindigkeiten</b> speeds vitesses	Heben lifting levage					
			m/min.	kg	m/min	kg
			45	1250	-	-
			22	2500	-	-
			5	2500	-	-
	Katzfahren trolley drive / chariotage				m/min.	20/40
	Kranfahren traveling / translation				m/min.	30
Drehen (stufenlos) slewing / rotation				r. p. m.	0,1 ↔ 1,0	

## Allgemeine technische Daten

general technical data / details techniques generaux

Konstruktionsgewicht weight / poids de la grue	kg	11000	Ges. elektr. Leistung motor power / puissance totale	kW	20
Gegengewicht counterweight / contrepoids	kg	22000* (18000)	Kabelquerschnitt cable section / section du câble	380 V	5 x 10 <sup>2</sup>
Max. Eckdruck max. wheel load / pression max.	kN	170	Kabeltrommel cable drum / enrouleur	m	54
Spurweite track gauge / écartement	m	3,8	Schienenprofil rail profile / profile du rail		S20-S33
Radstand wheel gauge / voie	m	3,8	<i>Anschlusswert</i>		<i>MSA</i>
Drehradius slewing radius / rayon de giration	m	2,3 (2,75)	* Gegengewicht CH counterweight CH / contrepoids CH		22000 kg

## Montage Assembly Montage

